

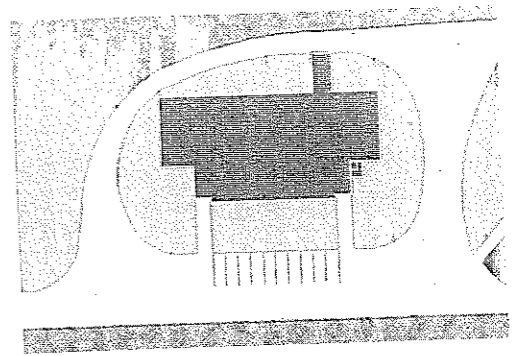
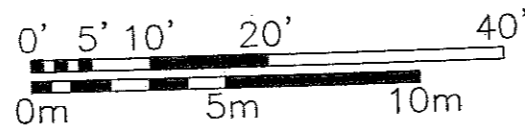
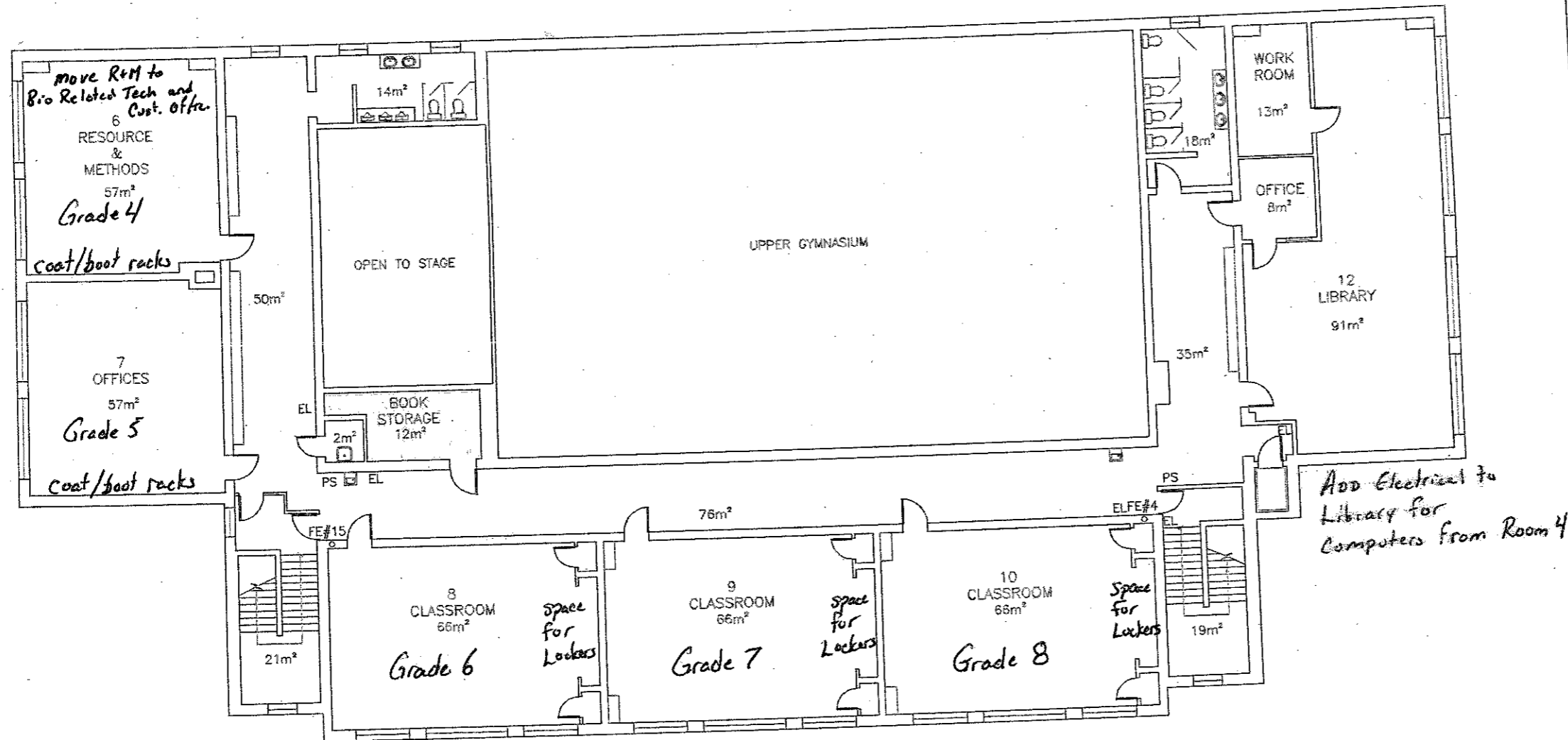
STORAGE

MECHANICAL / ELECTRICAL

LABORATORIES

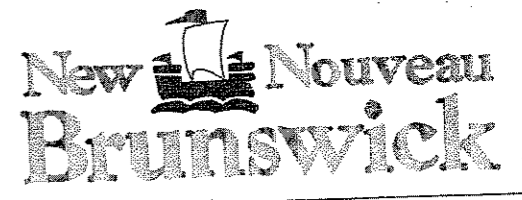
WATER / SPRINKLER

Option A - Provide Minor Renovations to the school to accommodate elementary students



NO.	REVISIONS / REVISIONS	DATE	PAR / BY

Department of Education
Ministère de l'Éducation



Bath Middle
118 School Street
Bath, NB
- School District 14 -

ECHELLE / SCALE 1/16" = 1'-0"	DATE August 16/11
DOSSIER D.A.O. / C.A.D. FILE bath middle.dwg	
DESSINÉ PAR / DRAWN BY C. STEEVES	NO DU DESSIN / DRAWING NO. A3
APPROUVÉ PAR / APPROVED BY	

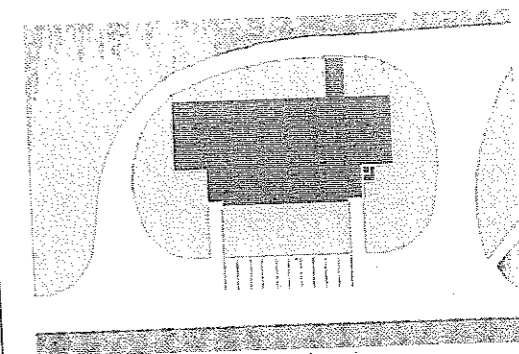
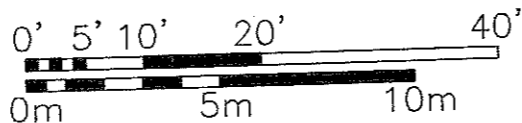
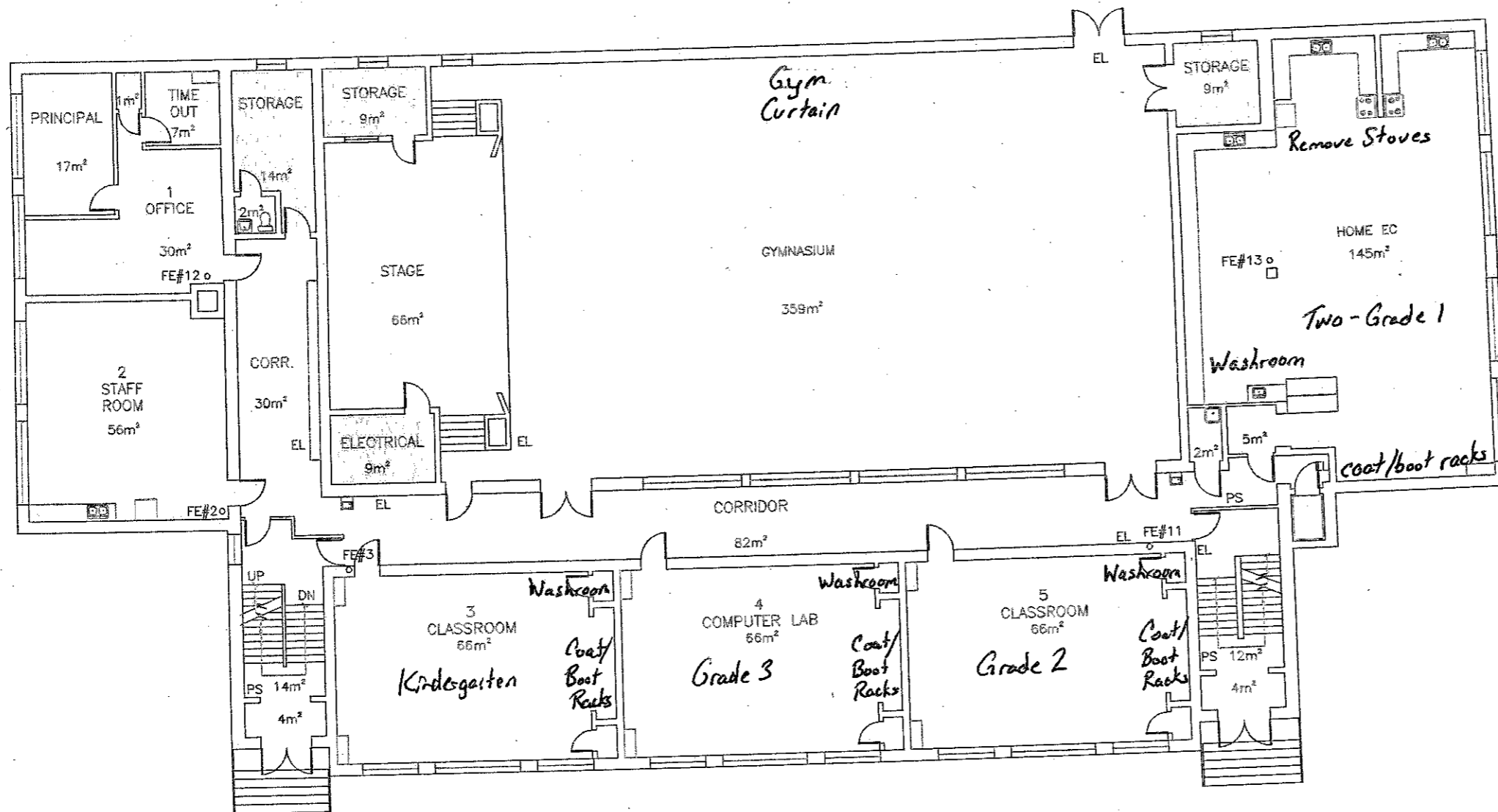
STORAGE

MECHANICAL / ELECTRICAL

LABORATORIES

WATER / SPRINKLER

Option A - Provide Minor Renovations to the school to accomodate elementary students



NO.	REVISIONS / REVISIONS	DATE	PAR / BY

Department of Education
Ministère de l'Éducation
New Brunswick

Bath Middle
118 School Street
Bath, NB
- School District 14 -

ÉCHELLE / SCALE 1/16" = 1'-0"	DATE August 16/11
DOSSIER D.A.O. / C.A.D. FILE bath middle.dwg	NO DU DESSIN / DRAWING NO.
DESSINÉ PAR / DRAWN BY C.STEEVES	A2
APPROUVÉ PAR / APPROVED BY XXXXX	

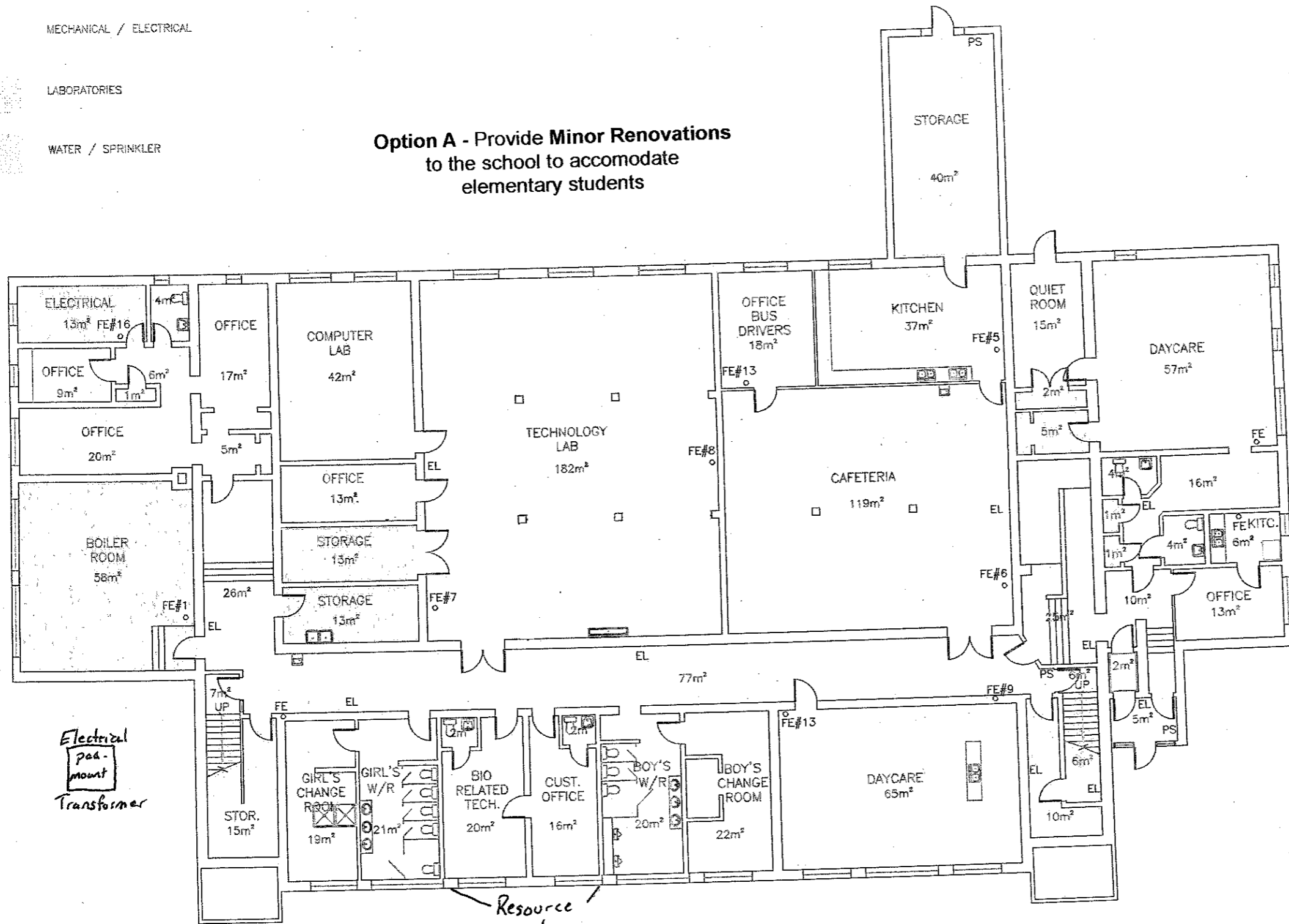
STORAGE

MECHANICAL / ELECTRICAL

LABORATORIES

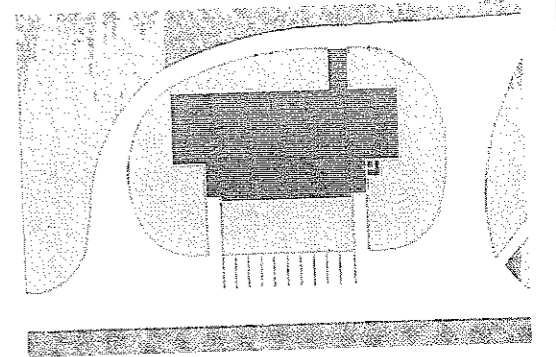
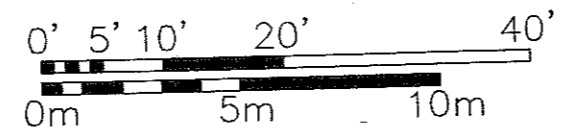
WATER / SPRINKLER

Option A - Provide Minor Renovations to the school to accommodate elementary students



Electrical pad-mount Transformer

Resource and Methods



NO.	RÉVISIONS / REVISIONS	DATE	PAR / BY

Department of Education
Ministère de l'Éducation

New Brunswick
Nouveau Brunswick

TITRE / TITLE
Bath Middle
118 School Street
Bath, NB
- School District 14 -

ECHELLE / SCALE 1/16" = 1'-0"	DATE August 16/11
DOSSIER D.A.O. / C.A.D. FILE both middle.dwg	
DESSINÉ PAR / DRAWN BY C.STEEVES	NO DU DESSIN / DRAWING NO. A1
APPROUVÉ PAR / APPROVED BY XXXXX	